



H131 Masia Lago Mar - Floor Plan description

Masia Lago Mar is an authentic Catalan holiday home, beautifully renovated in 2015. It has a unique situation, on the edge of the lake Pantà de Riudedecanyes. This also means that all floors have direct access to the garden in different levels.

The ground floor is in level with the parking, and have three large double rooms all with bathrooms ensuite, the dining room, kitchen and an extra exterior toilet.

- See page 2 for more information

The first floor is in level with the courtyard terrace with barbecue. There is direct access to the Spa-area with view over the lake and in clear weather the Mediterranean Sea in the horizon. Here you find 5 additional master bedrooms all designed to give each a beautiful view and all with bathrooms ensuite.

- See page 3 for more information

The second (loft) floor: From the first floor, the specially designed compensated stairs provide access to the two loft rooms, where up to 4-6 children can sleep. It is a great space for the children to have their own space, a bit away from the adults. 😊

- See page 4 for more information

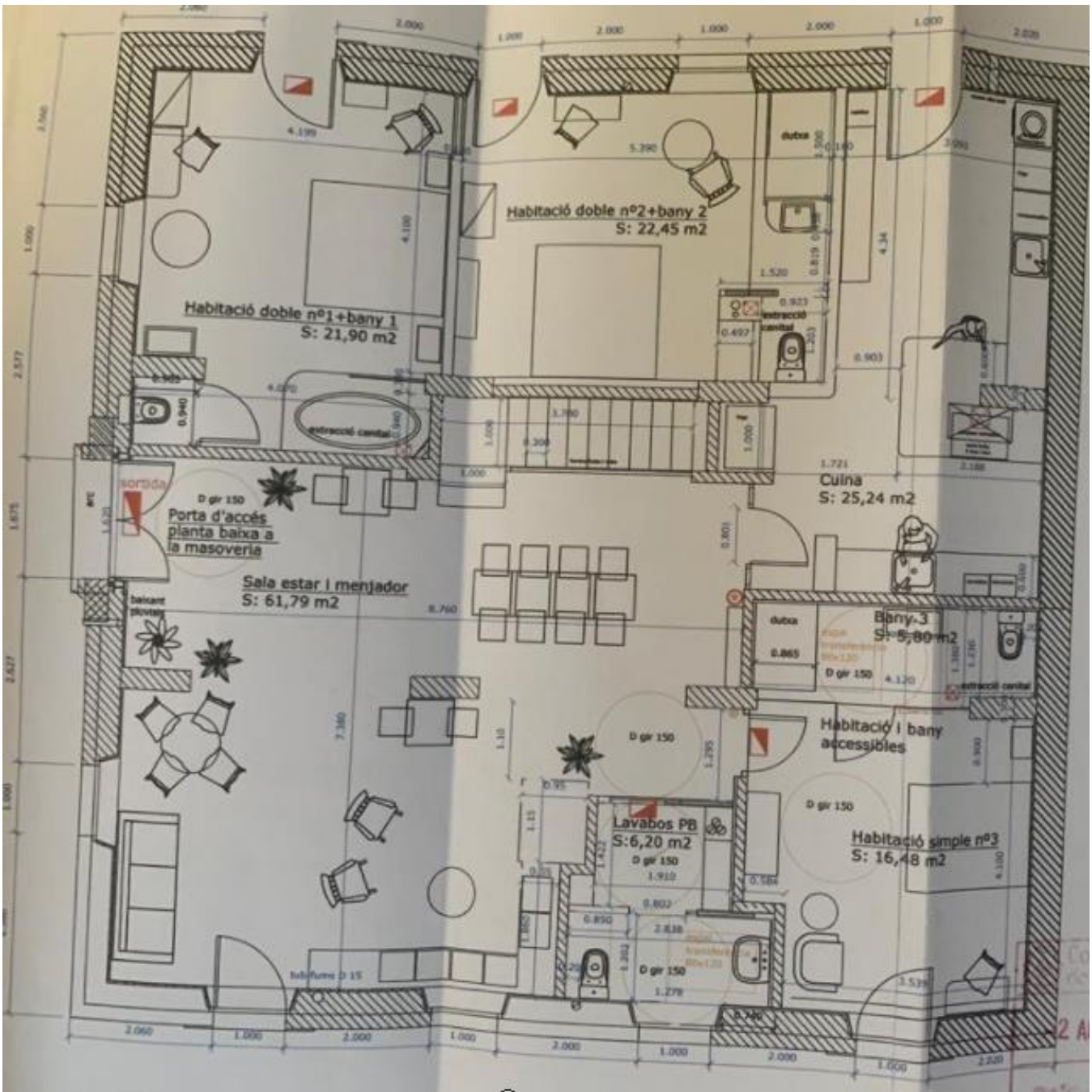
The pool area with the most scenic view: Latest, Ina and Albert has added the fantastic pool area one level above the Spa area. Here, there is also room for eating and relaxing in the sun loungers and enjoying the same fantastic view.

The distribution of facilities and bedrooms can be seen on the drawing on the following pages:

GROUND FLOOR (in level with lower garden and parking)

- Sitting area with TV
- Fully equipped kitchen
- Toilet
- Bedroom 1 (double bed and with Bathroom 1 ensuite)
- Bedroom 2 (double bed and with Bathroom 2 ensuite)
- Bedroom 3 (double bed and with Bathroom 3 ensuite)

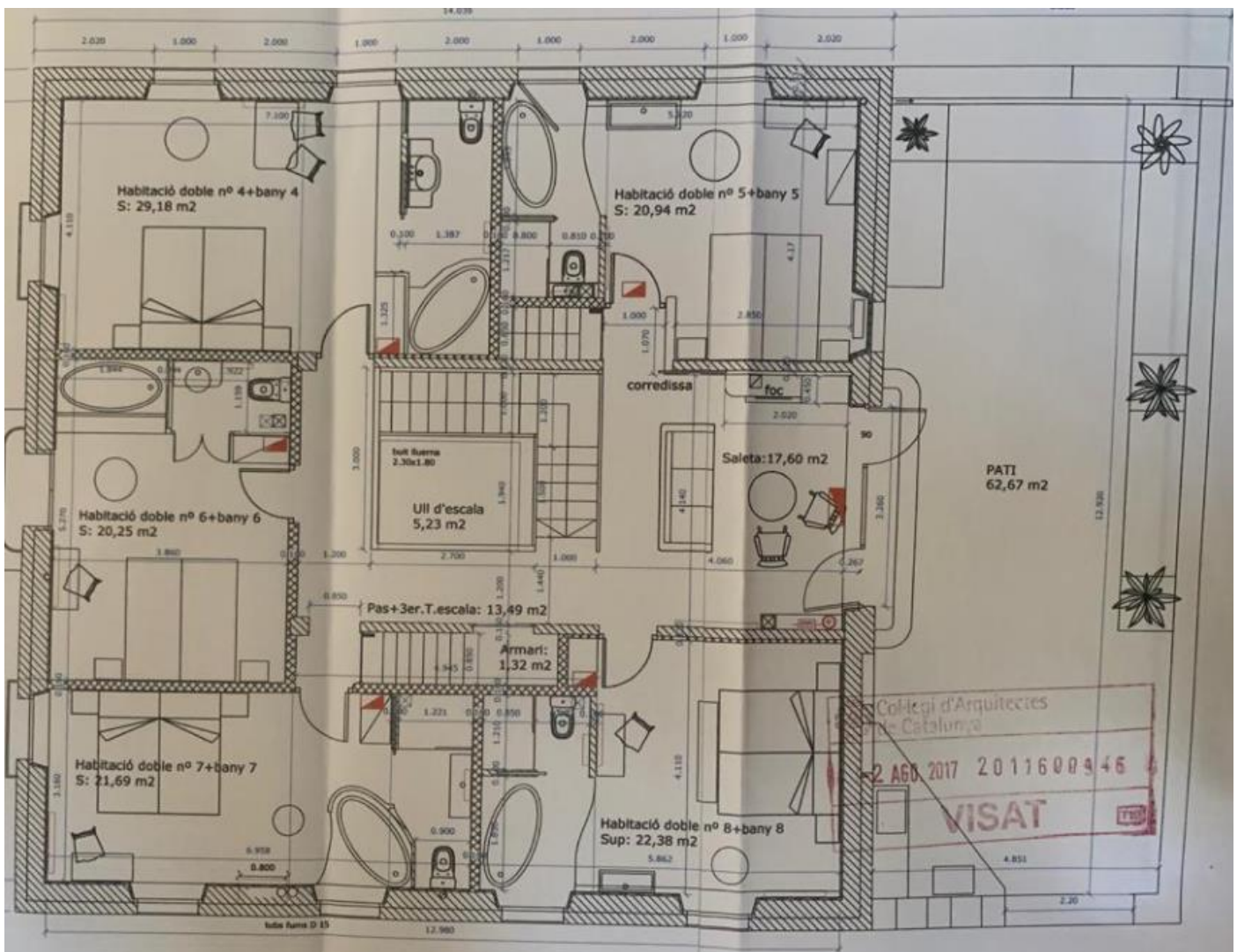
- *Extra beds: All bedrooms are so spacious that it leaves a lot of flexibility to install extra beds or baby beds, depending on your requirements.*



FIRST FLOOR (in level with the Spa and the courtyard terrace):

- Bedroom 4 (two single beds arranged as double beds) + Bathroom 4 ensuite
- Bedroom 5 (two single beds arranged as double beds) + Bathroom 5 ensuite
- Bedroom 6 (two single beds arranged as double beds) + Bathroom 6 ensuite
- Bedroom 7 (two single beds arranged as double beds) + Bathroom 7 ensuite
- Bedroom 8 (two single beds arranged as double beds) + Bathroom 8 ensuite
- Sitting area with TV
- Direct access to the courtyard and the Spa area

- **Extra beds:** All bedrooms are so spacious that it leaves a lot of flexibility to install extra beds or baby beds, depending on your requirements.



SECOND (LOFT) FLOOR:

- Loft bedroom 9 with two single beds (+ 1 more optional)
- Loft Bedroom 10 with two single beds (+ 1 more optional)

This is how it looks:



OUTDOOR FACILITIES:

- Court yard perfect for dining and with barbecue
- Outdoor Spa with fantastic view (winter: closed)
- Scenic pool area with sun loungers and terrace corner
- Trampoline
- Some garden on each level

- - -

and in close walking distance the lake, if you want a bigger swim 😊